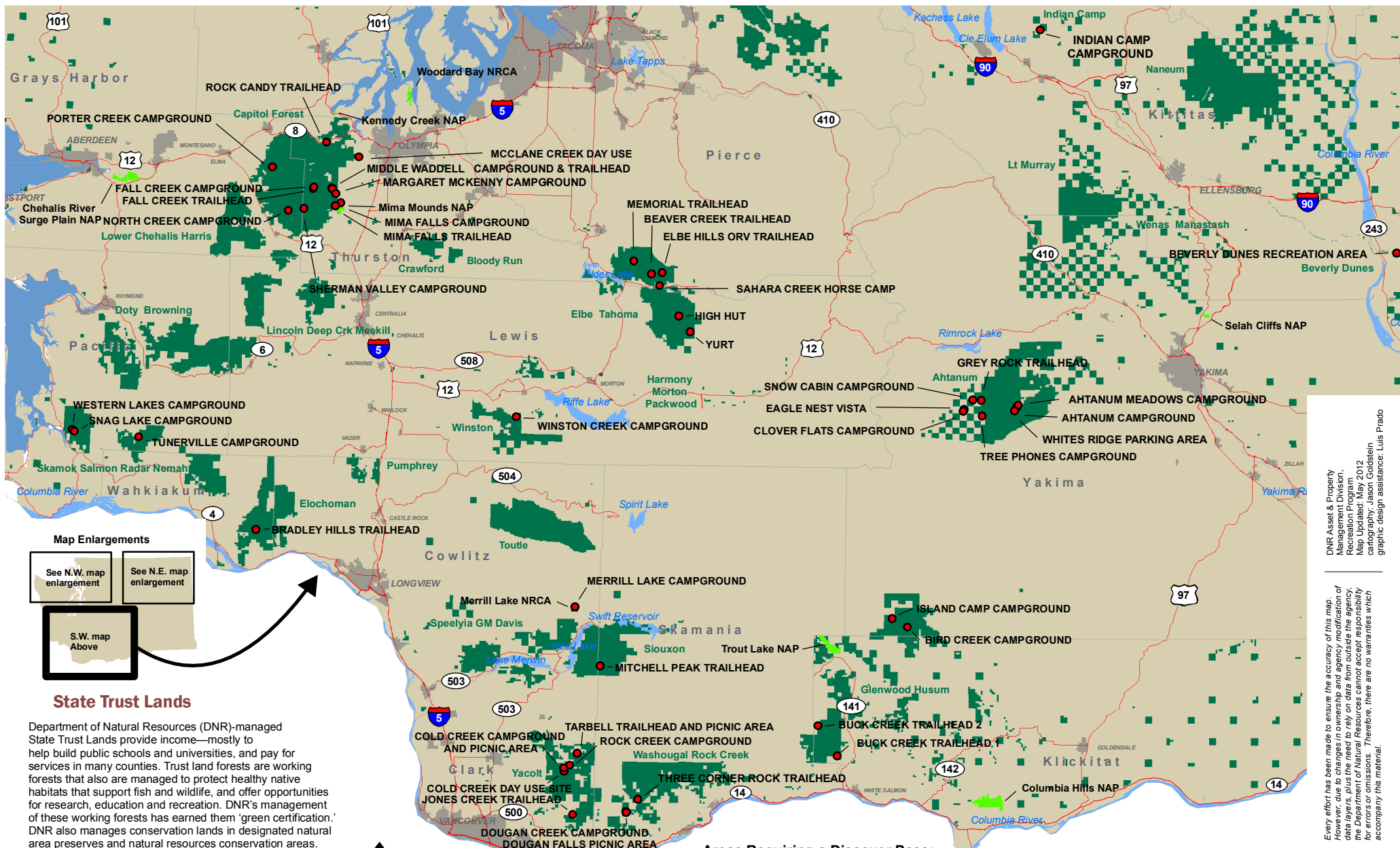




DNR-managed State Trust Lands Requiring a Discover Pass

S.W. map enlargement



Map Enlargements

See N.W. map enlargement

See N.E. map enlargement

S.W. map Above

State Trust Lands

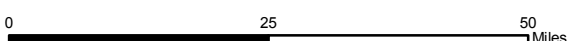
Department of Natural Resources (DNR)-managed State Trust Lands provide income—mostly to help build public schools and universities, and pay for services in many counties. Trust land forests are working forests that also are managed to protect healthy native habitats that support fish and wildlife, and offer opportunities for research, education and recreation. DNR's management of these working forests has earned them 'green certification.' DNR also manages conservation lands in designated natural area preserves and natural resources conservation areas.

For current information on recreation access to DNR-managed lands, visit: dnr.wa.gov/recreation



Thank you for your support in keeping these recreation areas open.

discoverpass.wa.gov 1-866-320-9933



Areas Requiring a Discover Pass:

- Developed Recreation Facilities & Trailheads
- DNR-managed State Trust Lands
- DNR-managed Natural Areas

Look for the following Discover Pass signs:



DNR Asset & Property Management Division, Recreation Program. Map Updated: May 2012 cartography: Jason Goldstein graphic design assistance: Luis Prado

Every effort has been made to ensure the accuracy of this map. However, due to changes in ownership and agency modification of data layers, plus the need to rely on data from outside the agency, the Department of Natural Resources cannot accept responsibility for errors or omissions. Therefore, there are no warranties which accompany this material.